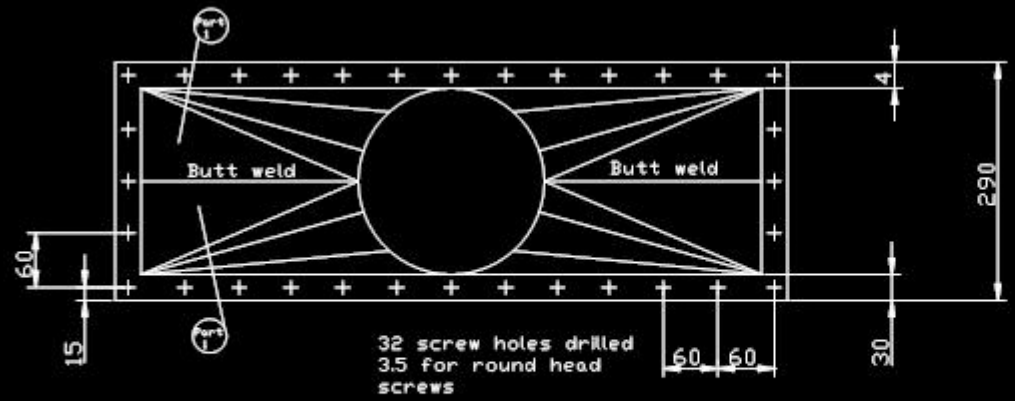
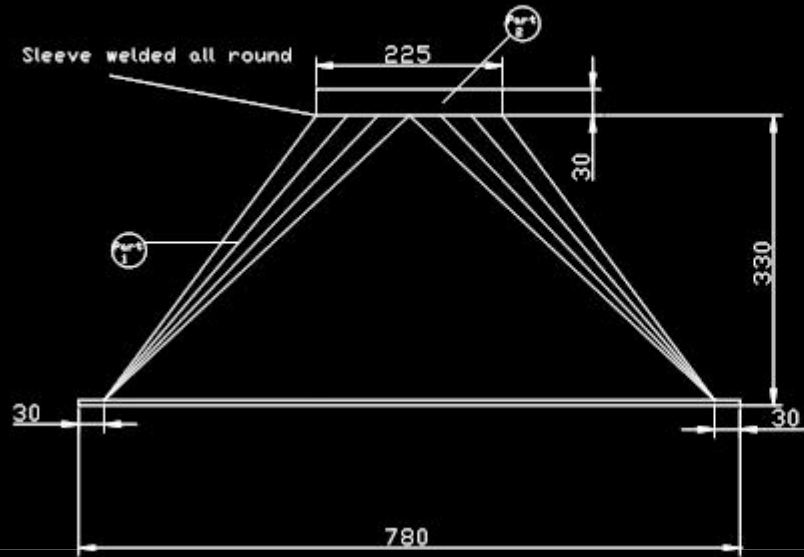


DO NOT SCALE

| PRT | Drw No | Description | QTY | Material |
|-----|---------|----------------------|-----|-----------------------|
| 1 | TD91-01 | Connector body 2x1/2 | 2 | 940x360x1 Steel sheet |
| 2 | TD91-04 | Connection sleeve | 1 | 30x715x1 Steel sheet |



| No. | Description | CHK | AP'D | DATE |
|-----|-------------|-----|------|------|
| | | | | |
| | | | | |

TITLE Air inlet connector

DRAWN A.P.D

TRACE -

CHK -



SCALE 1:4

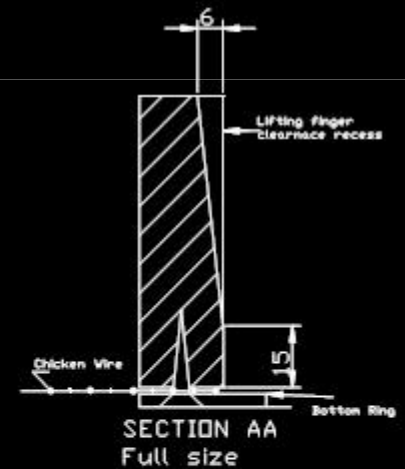
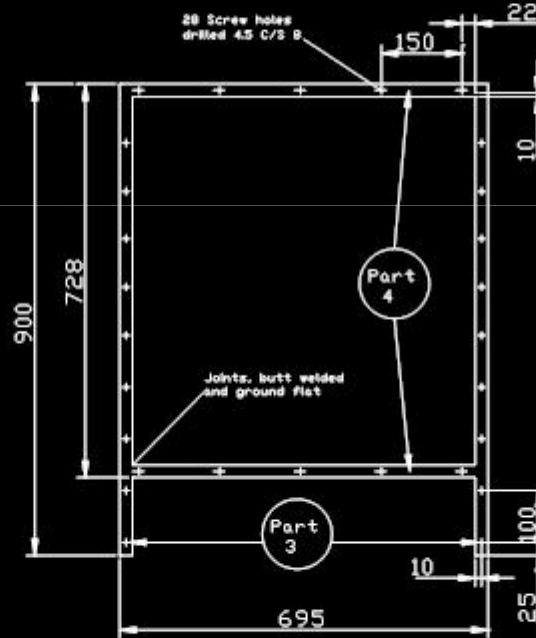
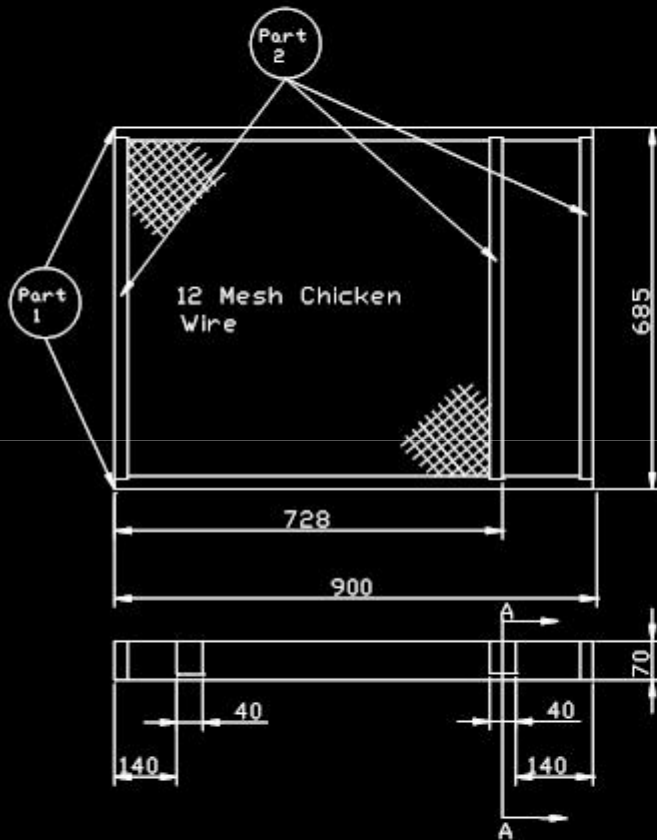
MATERIAL

DRAWING No. TD91-11

REVISIONS

All wood is planed all round and the sizes are DO NOT SCALE finished.
 The cross pieces are recessed in to the sides, glued and pinned

| PRT | Drg No | Description | QTY | Material |
|-----|---------|---------------------------|-----|---------------------|
| | TD91-07 | Complete trays | 12 | See below |
| 1 | TD91-07 | Tray sides | 2 | 70x20x900 Soft Wood |
| 2 | TD91-07 | Tray Cross pieces | 3 | 70x20x675 Soft Wood |
| 3 | TD91-07 | Bottom ring sides | 2 | 20x6x900 M/S bar |
| 4 | TD91-07 | Bottom ring cross pieces | 2 | 20x6x645 M/S bar |
| 5 | TD91-07 | 12 mesh Galv Chicken wire | 1 | 685x728 |
| 6 | TD91-07 | 20x7^3 Wood screws | | |
| 7 | TD91-07 | 40x12^6 Steel pins | | |



| No. | Description | CHK | AP'D | DATE |
|-----|-------------|-----|------|------|
| | | | | |
| | | | | |

TITLE Tray Assembly

DRAWN
A.P.D

TRACE
-

CHK
-



SCALE
1:8

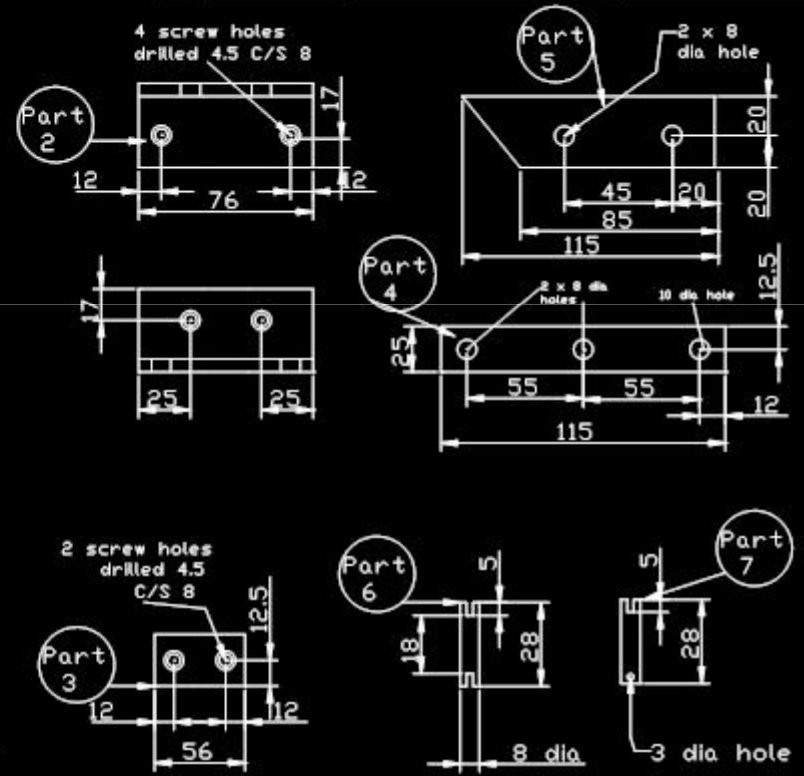
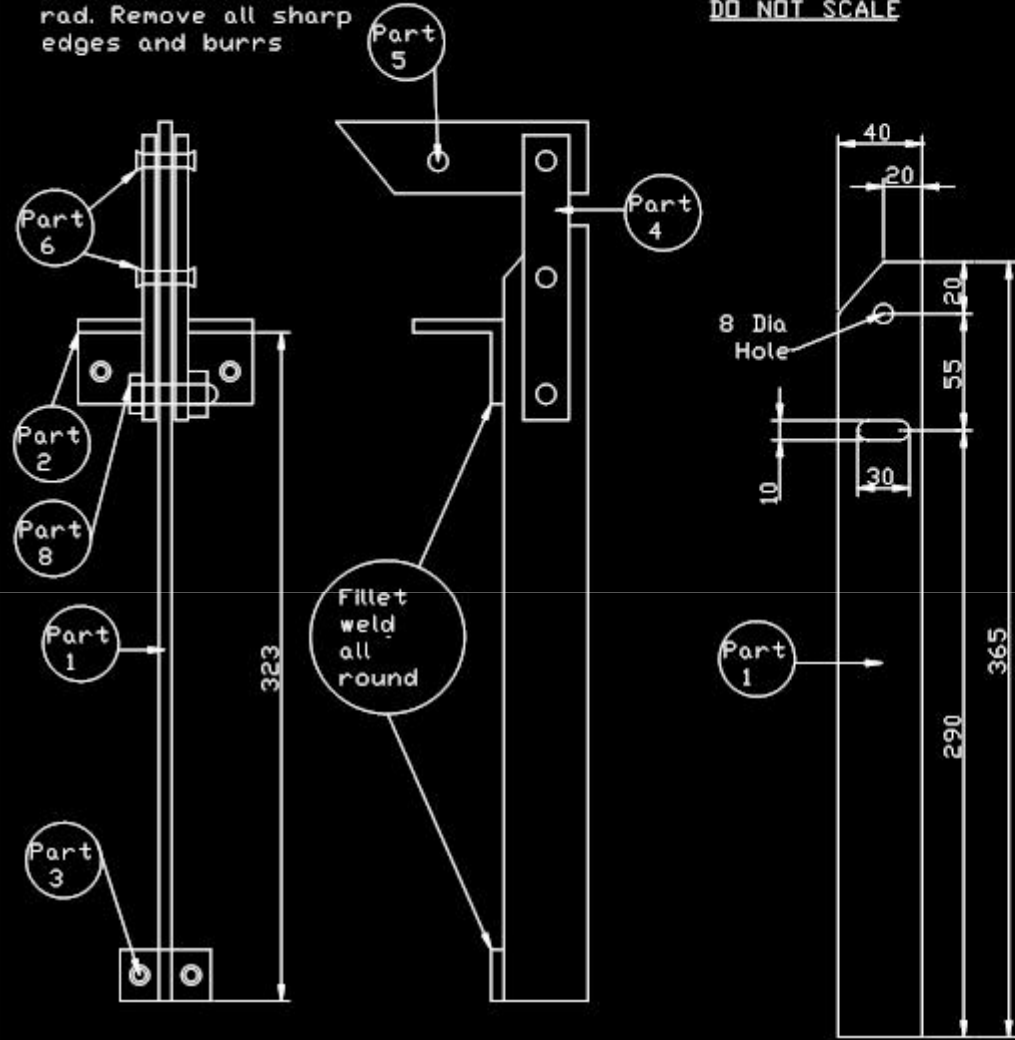
MATERIAL See list

DRAWING No. TD91-05

Radius all corners 3 rad. Remove all sharp edges and burrs

DO NOT SCALE

| PRT | Drwg No | Description | QTY | Material |
|-----|---------|-------------------------|-----|--------------------|
| | TD91-01 | Complete Assembly | 4 | See below |
| 1 | TD91-01 | Main Plate | 1 | 40x6x365 M/S Bar |
| 2 | TD91-01 | Top attachment angle | 1 | 40x40x6x75 M/S Bar |
| 3 | TD91-01 | Bottom attachment plate | 1 | 25x6x56 M/S bar |
| 4 | TD91-01 | Linking plates | 2 | 25x6x135 M/S bar |
| 5 | TD91-01 | Lifting Fingers | 1 | 40x6x115 M/S bar |
| 6 | TD91-01 | Fixed clevis pin | 2 | 8 Dia x 28 M/S rod |
| 7 | TD91-01 | Removable clevis pin | 1 | 8 Dia x 28 M/S rod |
| 8 | TD91-01 | Locking bolt and nut | 1 | 10x30 Hex Steel |



| | | | | |
|---|-------------|-----|------|------|
| See drawing TD91-08 for manufacture details | | | | |
| No. | Description | CHK | AP'D | DATE |
| REVISIONS | | | | |

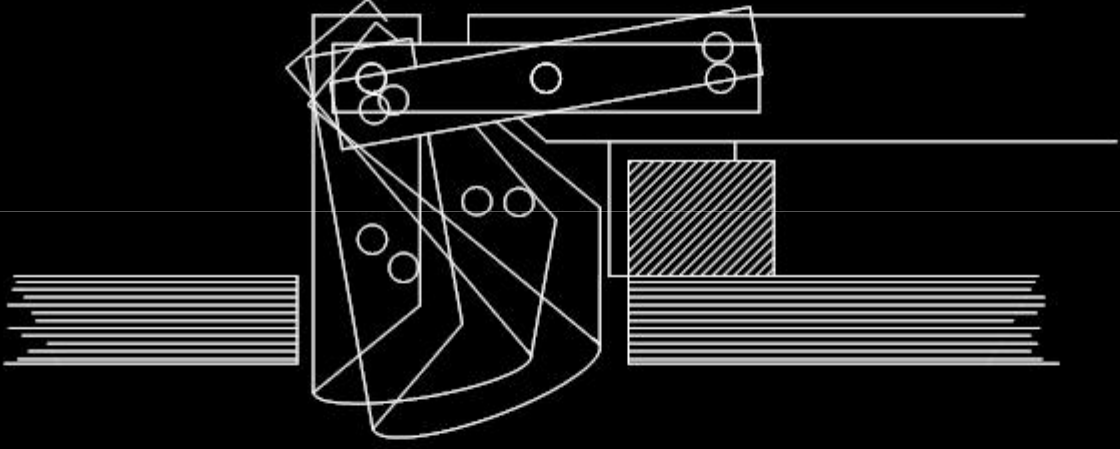
| | | | | |
|---------------------|---------------------|---------|-------|-----------|
| TITLE Tray Assembly | DRAWN A.P.D | TRACE - | CHK - | SCALE 1:8 |
| MATERIAL See list | DRAWING No. TD91-06 | | | |

| ITEM | DESCRIPTION | PART NUMBER | QUANTITY | COMMENTS | CHECKED |
|------|---------------------------|-------------|----------|----------|---------|
| 1 | Operating Handle | TD91-10 | | | |
| 2 | Operating Lever | TD91-09 | | | |
| 3 | Operating lever Extention | TD91-09 | | | |
| 4 | Hook Rod | TD91-10 | | | |
| 5 | Hook Rod Bracket | TD91-10 | | | |
| 6 | Hook Rod Clip | TD91-11 | | | |
| 7 | Lever Cam Plate | TD91-09 | | | |
| 8 | Cam Plate | TD91-09 | | | |
| 9 | Cam Shaft | TD91-09 | | | |
| 10 | Cam Connecting Rod | TD91-10 | | | |
| 11 | Lifting Rod | TD91-10 | | | |
| 12 | Rod Adjusters | TD91-10 | | | |
| 13 | Shaft Stop Plates | TD91-11 | | | |
| 14 | Finger Stop Plates | TD91-12 | | | |
| 15 | Lower Lifting Bracket | TD91-06 | | | |
| 16 | Tray Drier Frame | TD91-04 | | | |



Tray Drier 1991 Model

DO NOT SCALE



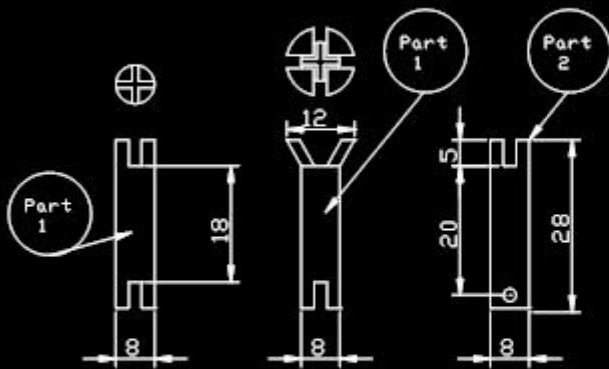
| No. | Description | CHK | AP'D | DATE |
|-----|-------------|-----|------|------|
| | | | | |
| | | | | |
| | | | | |

REVISIONS

| TITLE | Finger Development | DRAWN A.P.D | TRACE - | CHK - | SCALE 1:1 |
|----------|--------------------|---------------------|---------|-------|-----------|
| MATERIAL | | DRAWING No. TD91-07 | | | |

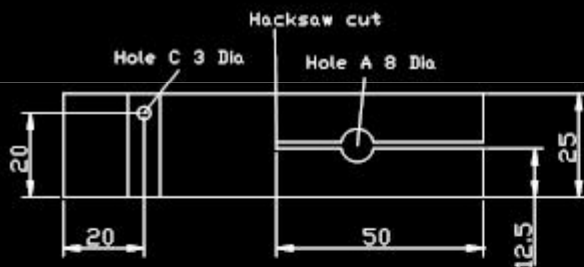
DO NOT SCALE

| PRT | Drg No | Description | QTY | Material |
|-----|---------|------------------------|-----|---------------------|
| 1 | TD91-01 | Fixed clevis pin | | 8 diax 28 Steel Rod |
| 2 | TD91-01 | Removeable clevis pin | | 8 diax 28 Steel Rod |
| 3 | TD91-05 | Clevis pin making tool | | 25x12x100 M/S Bar |
| | | | | |



Making Clevis Pins

1. Cut off required no of pins, to finished length
2. Place pin in hole A level with bottom face of tool
3. Clamp tool in vice with pin level to end of vice jaw
4. File small chamfer on the end of the pin and hacksaw two cuts at 90 degrees 5 mm deep
5. Repeat for second end
6. Place tool on a solid metal surface, put pin in holes A, drive a cold chisel into the sawcuts to spread the end. **DO NOT OVERSPREAD**
7. Assemble the parts
8. Clamp a cold chisel in the vice cutting edge upwards place assembly on top with one of the opened out slots on the chisel blade, drive a second chisel into the opposite end saw cuts to open out the second end.
9. The removeable pins are made as above, to drill the hole place pin in hole C and clamp in machine vice locking the spread end of the pin between the vice jaw and the tool, drill hole throughg tool and pin.



Part 3

| No. | Description | CHK | AP'D | DATE |
|-----------|-------------|-----|------|------|
| REVISIONS | | | | |

TITLE Clevis Pin manufacture

DRAWN A.P.D

TRACE -

CHK -

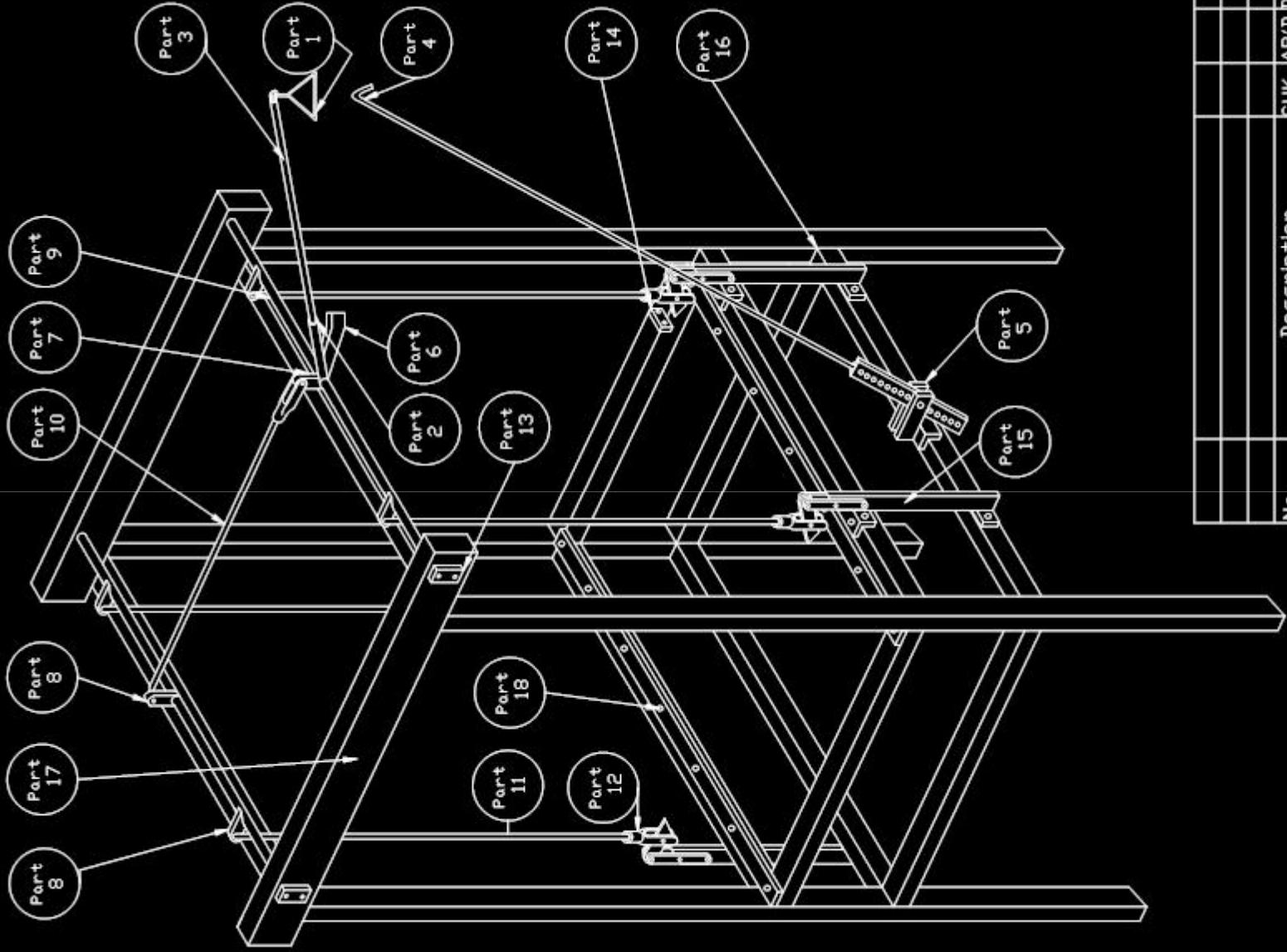


SCALE 1:1

MATERIAL Mild Steel

DRAWING No. TD091-08

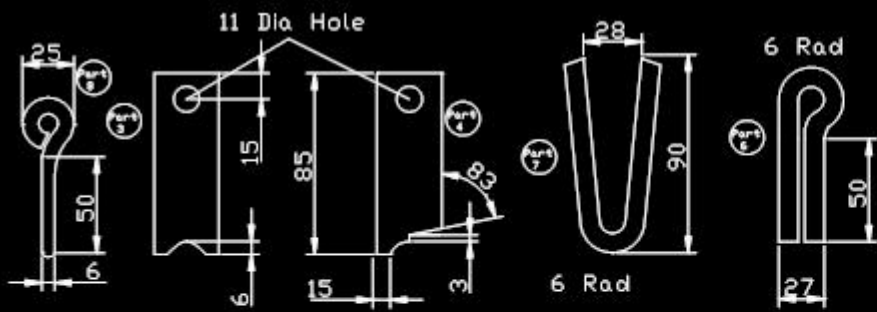
DO NOT SCALE



| No. | Description | CHK | AP'D | DATE |
|-----|-------------|-----|------|------|
| | | | | |
| | | | | |
| | | | | |

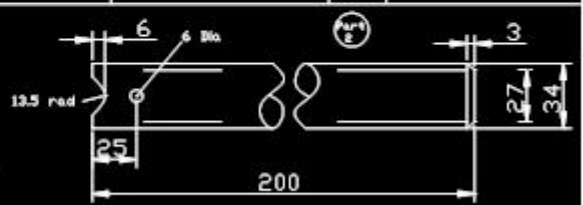
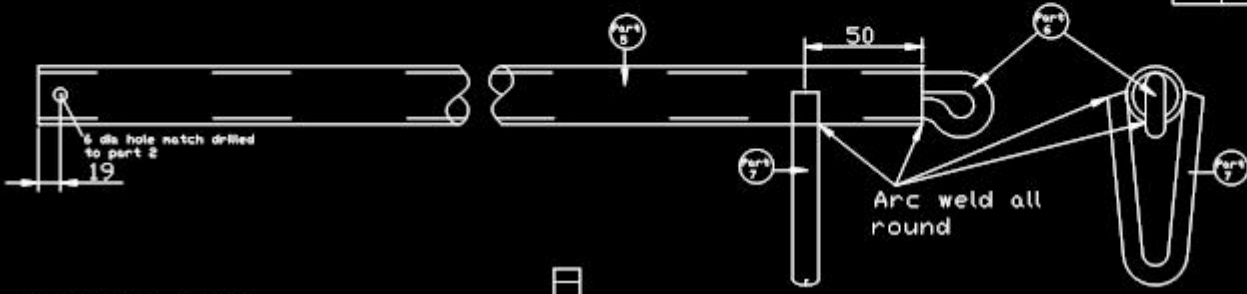
REVISIONS

| | | | | | | | | | |
|----------|---------------------|------|--------|-------|-----|--|-------|------|--|
| TITLE | Tray Drier | 1991 | DRAWN | TRACE | CHK | | SCALE | 1:10 | |
| | model | | A.P.D. | - | - | | | | |
| MATERIAL | DRAWING No. TD91-01 | | | | | | | | |

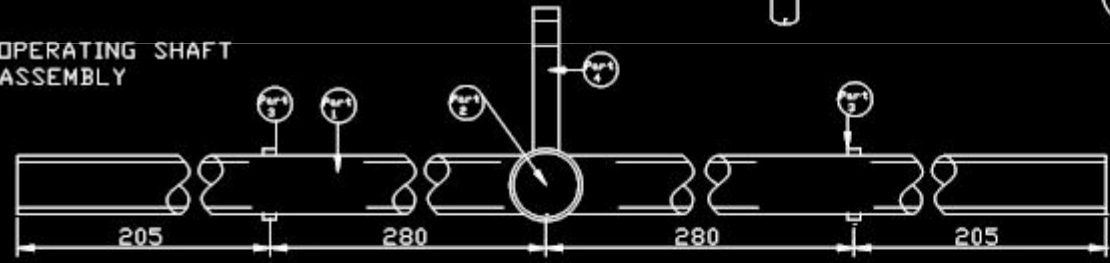


DO NOT SCALE

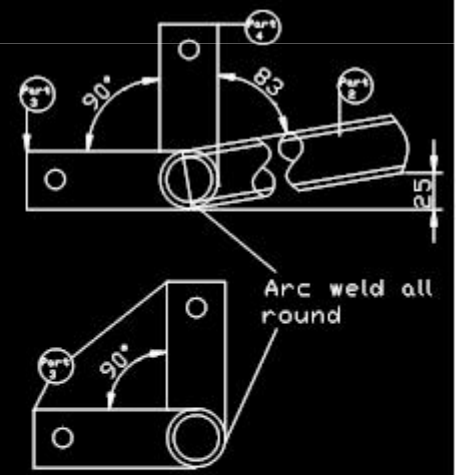
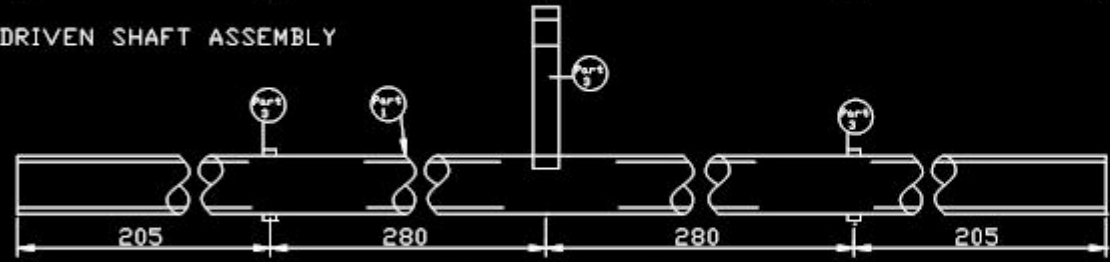
| PRT | Drq No | Description | QTY | Material |
|-----|---------|---------------------------|-----|----------------------|
| 1 | TD91-06 | Can shaft | 2 | 2700x980 Water pipe |
| 2 | TD91-06 | Operating lever | 1 | 3400x200 Water pipe |
| 3 | TD91-06 | Can plates | 5 | 30x6x85 M/S Bar |
| 4 | TD91-06 | Can plate | 1 | 30x6x85 M/S bar |
| 5 | | Operating lever extension | 1 | 2700x1000 Water pipe |
| 6 | | Handle Ring | 1 | 10 diax164 M/S rod |
| 7 | | Hook Rod Link | 1 | 10 Diax240 M/S rod |
| 8 | | Operating lever pin | 1 | 6 Dia x85 M/S rod |



OPERATING SHAFT ASSEMBLY



DRIVEN SHAFT ASSEMBLY



| | | | |
|---|-------------|-----|-----------|
| See drawing TD91-08 for manufacture details | | | |
| No. | Description | CHK | AP'D DATE |
| REVISIONS | | | |

TITLE Tray Assembly

DRAWN A.P.D

TRACE -

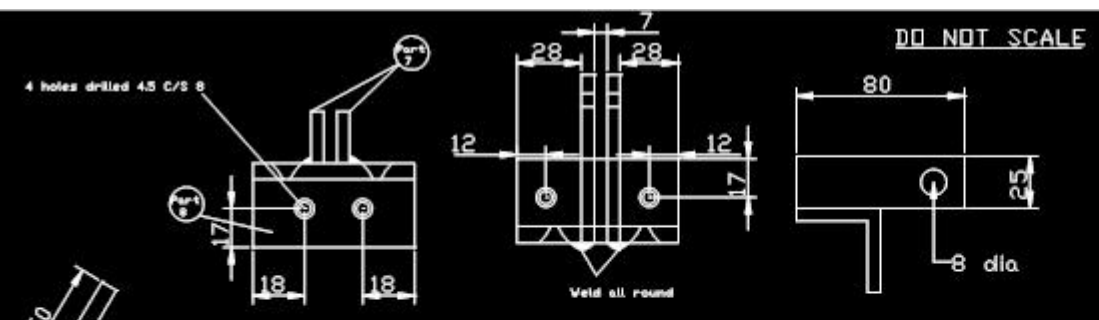
CHK -



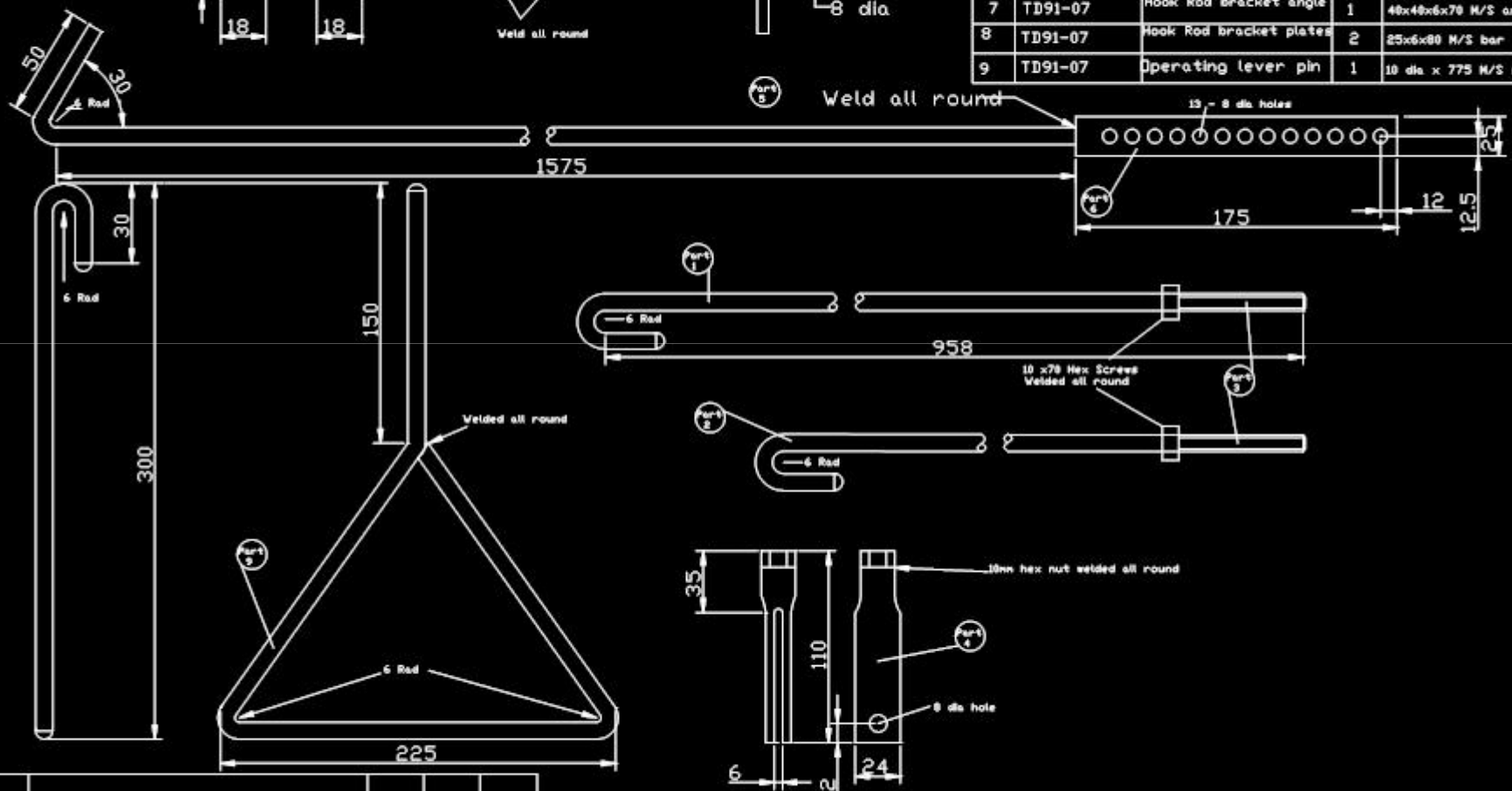
SCALE 1:2

MATERIAL

DRAWING No. TD91-09



| PRT | Drwg No | Description | QTY | Material |
|-----|---------|-------------------------|-----|-----------------------|
| 1 | TD91-07 | Lifting rods | 4 | 10 dia x940 M/S Rod |
| 2 | TD91-07 | Can connecting rod | 1 | 10 dia x870 M/S Rod |
| 3 | TD91-07 | Hex steel screws | 5 | 10 dia x70 long |
| 4 | TD91-07 | Rod adjusters | 5 | 1700 x 102 water pipe |
| 5 | TD91-07 | Hook rod | 1 | 10 dia x 1535 M/S rod |
| 6 | TD91-07 | Hook rod adjuster plate | 1 | 25x6x175 M/S Bar |
| 7 | TD91-07 | Hook Rod bracket angle | 1 | 40x40x6x70 M/S angle |
| 8 | TD91-07 | Hook Rod bracket plates | 2 | 25x6x80 M/S bar |
| 9 | TD91-07 | Operating lever pin | 1 | 10 dia x 775 M/S rod |

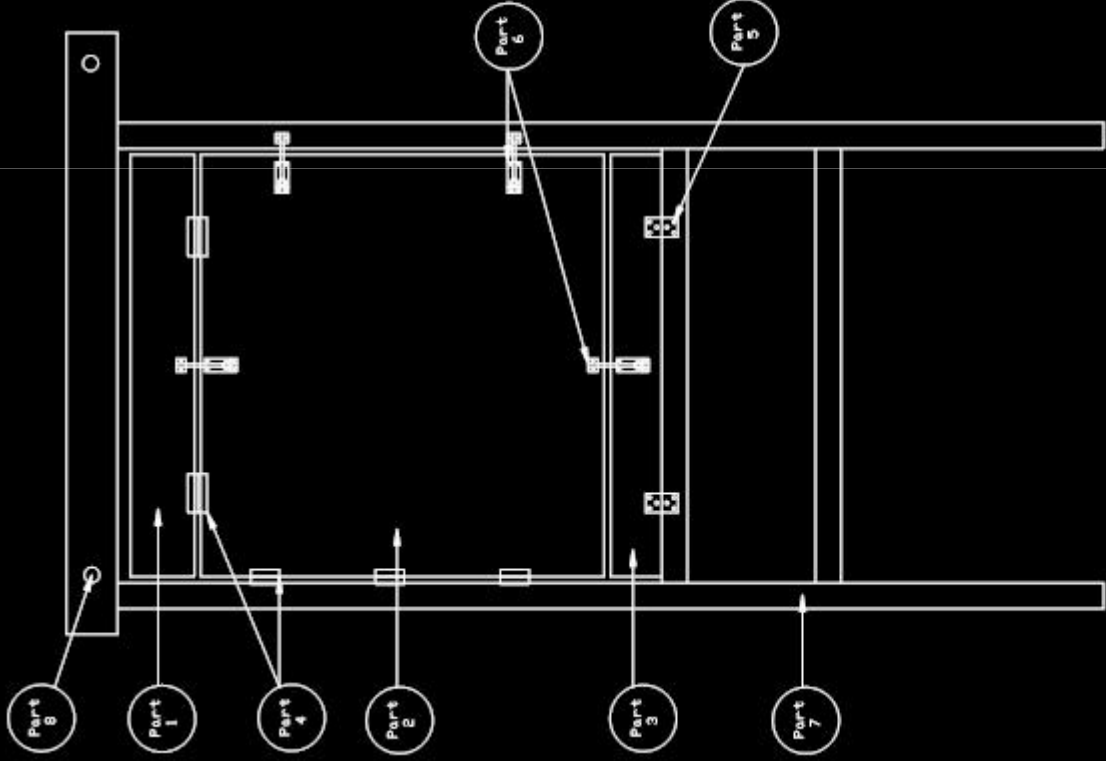


| No. | Description | CHK | AP'D | DATE |
|-----|-------------|-----|------|------|
| | | | | |
| | | | | |
| | | | | |

TITLE Rod assemblies and operating handle DRAWN A.P.D TRACE - CHK - SCALE 1:2

MATERIAL DRAWING No. TD91-10

DO NOT SCALE



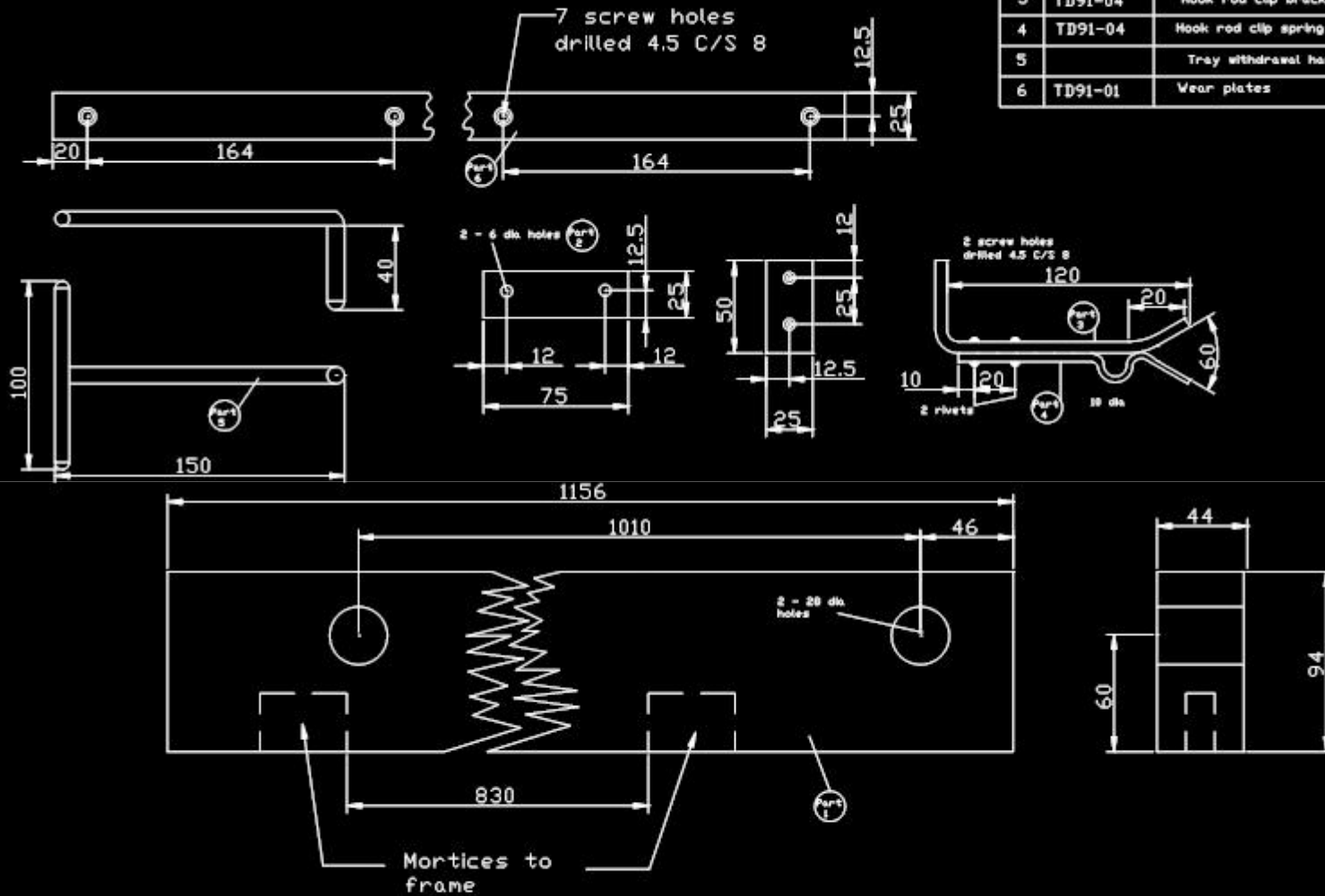
| No. | Description | DRG No | QTY | Material |
|-----|---------------------|---------|-----|---------------|
| 1 | Tray Loading door | TD91-03 | 1 | 825x150 |
| 2 | Access Door | TD91-03 | 1 | 825x780 |
| 3 | Tray Unloading door | TD91-03 | 1 | 825x100 |
| 4 | Hinges | TD91-03 | 5 | 75 Steel Bolt |
| 5 | Hinges | TD91-03 | 2 | 70 Steel Bolt |
| 6 | Locking bolts | TD91-03 | 4 | 75 Long |
| 7 | Tray Drier Frame | TD91-04 | | |
| 8 | Bearing Rail | TD91-11 | | |

PARTS

| | | | | | | |
|----------|--------------|---------------------|-------|-----|--|-------|
| TITLE | Access Doors | DRAWN | TRACE | CHK | | SCALE |
| | | A.P.D | - | - | | |
| MATERIAL | see list | DRAWING No. TD91-03 | | | | |

DO NOT SCALE

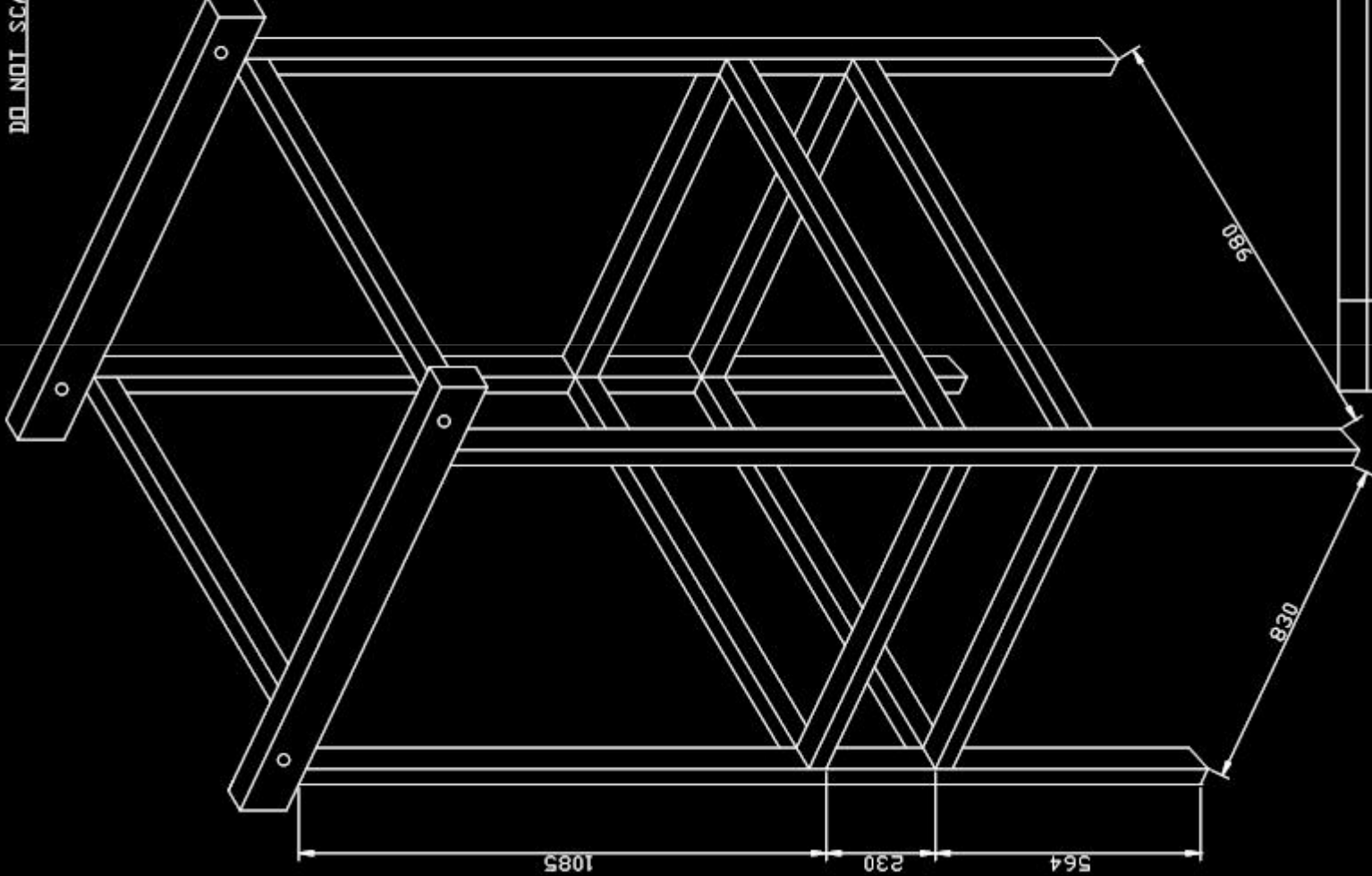
| PRT | Drq No | Description | QTY | Material |
|-----|---------|------------------------------|-----|-------------------------|
| 1 | TD91-01 | Bearing rail | 1 | 94x44x1156 Hardwood |
| 2 | TD91-04 | Shaft and finger stop plates | 8 | 25x3x75 M/S Bar |
| 3 | TD91-04 | Hook rod clip bracket | 1 | 25x3x175 M/S Bar |
| 4 | TD91-04 | Hook rod clip spring | 1 | 25x0.5x130 Spring Steel |
| 5 | | Tray withdrawal handle | 1 | 5 dia x 290 M/S rod |
| 6 | TD91-01 | Wear plates | 2 | 25x3x1020 M/S Bar |



| No. | Description | CHK | AP'D | DATE |
|-----|-------------|-----|------|------|
| | | | | |
| | | | | |

| | | | | | | | | | |
|----------|-------------------------------------|-------|-------|-------|---|-----|---|-------|-----|
| TITLE | Rod assemblies and operating handle | DRAWN | A.P.D | TRACE | - | CHK | - | SCALE | 1/2 |
| MATERIAL | DRAWING No. TD91-10 | | | | | | | | |

DO NOT SCALE



| No. | Description | CHK | AP'D | DATE |
|-----|-------------|-----|------|------|
| | | | | |
| | | | | |
| | | | | |

REVISIONS

TITLE Tray drier frame
DRAWN A.P.D. -
TRACE -
CHK -
SCALE 1/8

MATERIAL
DRAWING No. TD91-04